

VMMX-50M/1000M-SMT

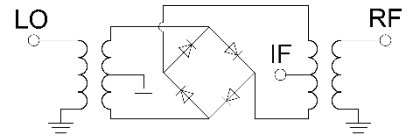
FEATURES

- ◆ Frequency Range: 50~1000MHz
- ◆ Conversion Loss: 9dB Max.



TYPICAL APPLICATIONS

- ◆ Military
- ◆ Testing
- ◆ Commercial



ELECTRICAL SPECIFICATIONS

Zo=50 Ohm, LO=+7 dBm

Parameter	Conditions	Min.	Typ.	Max.	Unit
Frequency Range	-	50	-	1000	MHz
Conversion Loss	50~1000MHz	-	-	9	dB
Isolation (L-R)	50~1000MHz	22	33	-	dB
Isolation (L-I)	50~1000MHz	20	32	-	dB
P1dB	50~1000MHz	-	1	-	dBm
IP3	50~1000MHz	-	17	-	dBm

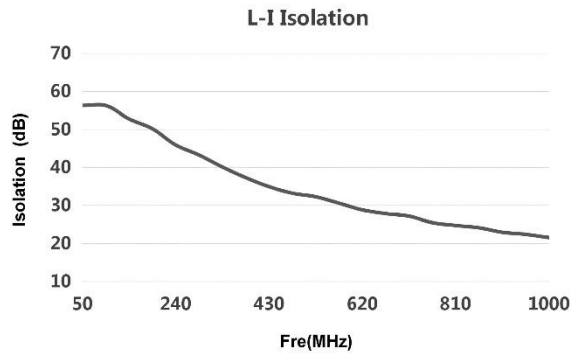
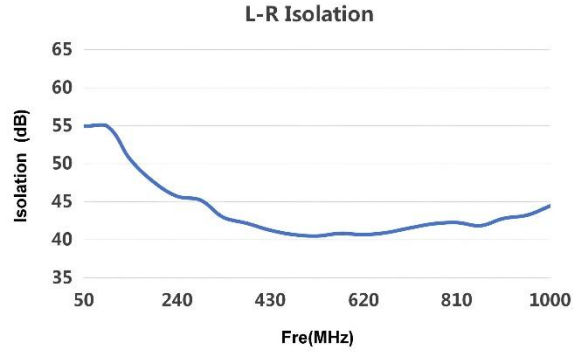
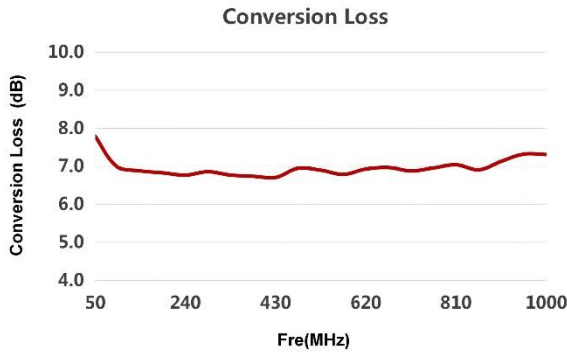
Notes:

- 1: Specifications guaranteed over the operating temperature range.
- 2: Touchstone format SNP file is available while it is necessary.

MAXIMUM RATINGS

Parameter	Min.	Max.	Unit
RF Power	-	0.05	Watt
DC Current	-	10	mA
Operating Temperature Range	-40	85	°C
Storage Temperature Range	-55	100	°C
Moisture Sensitivity Level	-	1	-

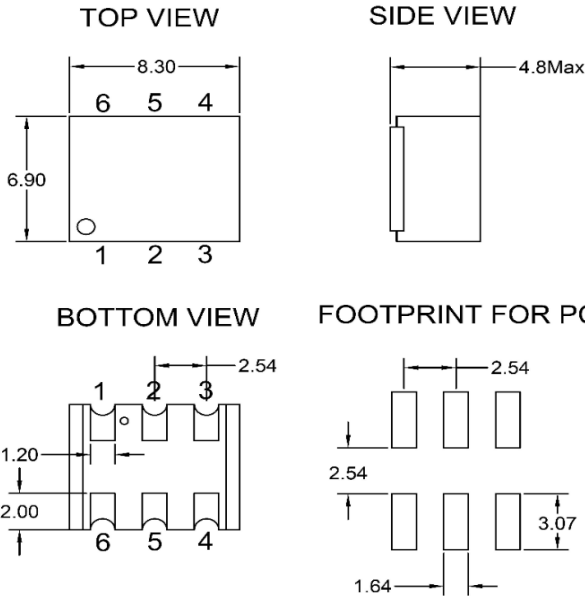
TYPICAL PERFORMANCE CURVES



Typical Performance Data

Frequency (MHz)		Conversion Loss (dB)	Isolation L-R (dB)	Isolation L-I (dB)
RF	LO	LO(+7dBm)	LO(+7dBm)	LO(+7dBm)
50.00	80.00	7.79	54.96	56.33
100.00	130.00	6.98	50.56	52.81
150.00	180.00	6.88	47.62	50.24
200.00	230.00	6.83	45.73	45.96
250.00	280.00	6.77	45.23	43.31
300.00	330.00	6.86	42.93	40.16
350.00	380.00	6.77	42.16	37.36
400.00	430.00	6.74	41.25	34.98
450.00	480.00	6.71	40.67	33.25
500.00	530.00	6.95	40.49	32.31
550.00	580.00	6.90	40.83	30.62
600.00	630.00	6.79	40.67	28.85
650.00	680.00	6.93	40.95	27.88
700.00	730.00	6.97	41.56	27.21
750.00	780.00	6.88	42.10	25.50
800.00	830.00	6.96	42.26	24.77
850.00	880.00	7.04	41.85	24.16
900.00	930.00	6.91	42.80	22.98
950.00	980.00	7.13	43.23	22.43
1000.00	1030.00	7.32	44.45	21.58

OUTLINE DRAWING



PIN No.	Definition
3	IF
4	RF
6	LO (+7dBm)
1,2,5	GND

Notes:

- 1: Dimensions in mm.
- 2: Tolerance $\pm 0.3\text{mm}$ unless otherwise noted.
- 3: 3D model in STEP format is available.