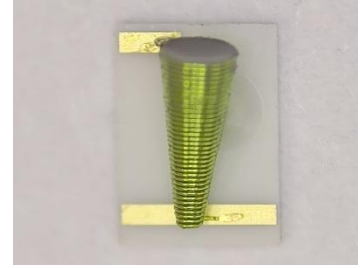


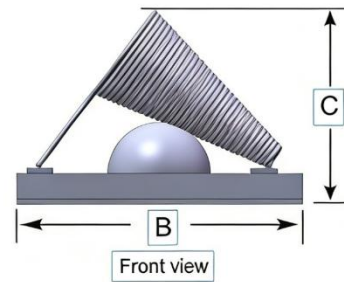
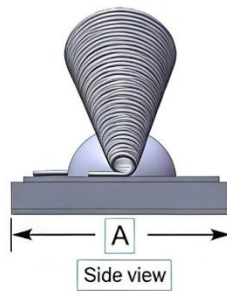
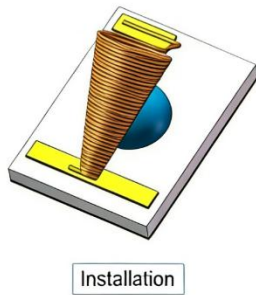
## CCM Broadband Conical Inductors

### FEATURES

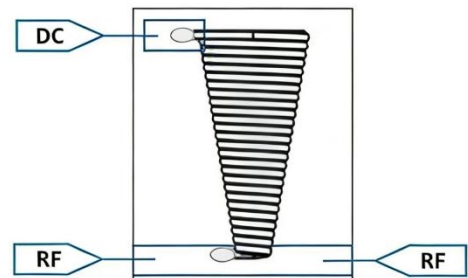
- ◆ Integrated 50Ω microstrip lines
- ◆ Low insertion loss (<0.60 dB)
- ◆ It has solder joints at the power supply end
- ◆ The broadband performance can reach up to 53 GHz
- ◆ It is particularly suitable for bias three-way applications
- ◆ It adopts a substrate mount design and is suitable for chip lead bonding applications



### STRUCTURAL DIAGRAM



Part Number	Size (mm)
A (mm)	2.04±0.05
B (mm)	2.80±0.05
C (mm)	2.04±0.05



*The tolerance ± 0.05 is not marked, the contents of the specification are subject to update without notice. Please contact the consultant or confirm the technical parameters on the official website before ordering.*

### FREQUENCY RESPONSE

